



WAGS 2021/22

First Wednesday in September 2021 to the last Wednesday in
August 2022

SAILING INSTRUCTIONS

1. RULES

- 1.1 The regatta will be governed by the rules as defined in the current Racing Rules of Sailing.
- 1.2 All yachts shall comply with AS Special Regulations Part 1 – Category 6.
- 1.3 Where lifelines complying with AS SR Part 1 Section 3 Rule 3.12 have not been fitted, all crew shall wear a visible personal floatation device as per AS SR Part 1 Section 5.
- 1.4 All boats using outboard engines shall comply with AS SR Part 1 Section 3 Rule 3.24.4.
- 1.5 All skippers shall comply with the Transport Operations (Marine Safety) Act 1994 and Regulation. In the event of a reportable Marine Incident the RQYS Sailing Office is to be notified as soon as is practical; but no later than 1 hour after the incident, a copy of the Marine Incident Report is required to be lodged with the RQYS Sailing Office at the same time it is lodged with Maritime Safety Queensland.
- 1.6 **Boats shall keep 20m clear of ALL Aids to Navigation. A boat failing to keep outside this exclusion zone may be protested by the Race Committee. Multiple breaches of the exclusion zone at marks may result in a boat being refused subsequent entry from WAGS for a period of time at the discretion of the Sailing Manager. THIS IS A REQUIREMENT OF MARITIME SAFETY QLD.**
- 1.7 **Boats that make contact with another vessel shall immediately retire**

2. ELIGIBILITY AND FEES

- 2.1 WAGS races are open to all Monohull and Multihull Yachts (both trailerable and fixed keel) on the register of a yacht or sailing club affiliated with Australian Sailing (AS). Dinghies are not permitted to sail in WAGS.
- 2.2 For boats that are owned and skippered (on the day) by RQYS Full Members and RQYS Members of other Sailing Categories: \$10.00 per race.
For Boats that are owned and skippered (on the day) by non-members: \$10.00 per race.
- 2.3 All crew are required to be included in the boats online entry/registration before each race.
- 2.4 Single handed entries are NOT eligible.
- 2.5 Boats may enter the event by registering online at <https://app.sailsys.com.au/club/25/entry/series/1188/pricing>
- 2.6 To be considered an entry in the event, a boat shall complete all registration requirements and pay all fees.

3. SAIL RESTRICTIONS

- 3.1 All boats are to sail with a singular Jib or Genoa, and Mainsail only. Other sail combinations based on a boat's designed rig (e.g. Ketches, Schooners, etc.) are permitted with prior approval by the Race Committee. Loose luffed headsails (e.g. Screecher, Code 0, Spinnakers) are not permitted.

WAGS 2021 - 2022
NOTICE OF RACE & SAILING INSTRUCTIONS
The Royal Queensland Yacht Squadron (RQYS)

4. SCHEDULE OF RACES

DAY	EVENT	TIME
Each Wednesday at the discretion of the Race Committee	Boat Registration at WAGS table in RQ Bar or online via SailSys (Crew still need to be registered before every race, online on SailSys "Crew List")	Between 1100 and 1225hrs
	Handicaps (Start Times) Announced	1225hrs
	Racing	As per allocated start time
	Presentation in RQ Bar	1700 hrs on the day of race
WAGS SPECIAL EVENTS		
17 November 2021	Ross Jullyan Memorial Trophy WAGS	
22 December 2021	Christmas WAGS	
10 August 2022	Peter Beard Memorial Trophy WAGS -- Ekka Wednesday	

5. RACING AREA

All races will be conducted on Waterloo and Moreton Bays West, East, and South of Green Island.

6. THE COURSES

6.1 All courses start and finish as per SI 8.4 and 9.1.

6.2 The courses to be sailed will be as per the course descriptions at the end of these Sailing Instructions.

6.3 The course flag confirming the course to be sailed will be flown from the start boat. In the event that the start boat is not on station, competitors shall monitor Channel VHF 72 for course information.

6.4 Courses may be shortend as per RRS 32.

6.5 Where a course is to be in the "Reversed" version, the Start Boat Shall display the flag for that course followed by the "R" Code flag.

7. MARKS

7.1 All marks are Navigation Marks – When a navigation mark is nominated as a mark of a course it shall be left in the manner described in the course booklet, otherwise all navigation marks shall be observed in the correct manner.

7.2 Where a navigation mark is to be rounded due consideration to the weather conditions including tidal effect shall be given.

7.3 The Race Committee emphasize SI 1.6 regarding Navigational Marks.

7.4 Where the start boat displays either a Red or Green flag, vessels shall observe a "Clearance Mark" which shall be located on the leg of the start boat to the first mark. All vessels shall leave this mark to the side indicated by the flag flying. E.g. if a Red flag is flying, vessels shall leave this mark to Port.

8. THE START

8.1 Races will be started as follows:

8.1.1 Boats shall start no earlier than their allocated start time. All times are in Brisbane EST time. Syncing of your clock is recommended at <http://www.timeanddate.com/worldclock/fullscreen.html?n=47>

8.1.2 The Race Officer (starter) will *usually* raise a start bat 10 seconds prior to the minute and lower the start bat on the minute.

8.1.3 A sound signal will be given to any yacht starting early and therefore they are required to restart, This changes RRS 26.

8.2 All boats shall keep clear of the start line and not cross in either direction prior to their designated start time.

8.3 A boat re-starting because of OCS shall return and re-enter the course via the rounding of the pin or start boat and keep clear of all starting boats. NO DIPPING.

8.4 The starting line will be between a staff displaying an orange flag on the start boat at the starboard end and an orange buoy at the port end approximately 300m to 800m from the outer Manly Harbour Leads.

8.5 In the case where the start boat is not on station, the start line shall be an extension of the Eastern Port and Starboard Lateral Beacons to the south and within 100m. In these circumstances boats are required to start at their allocated starting time.

WAGS 2021 - 2022
NOTICE OF RACE & SAILING INSTRUCTIONS
The Royal Queensland Yacht Squadron (RQYS)

9. THE FINISH

- 9.1 The finishing line will be between a staff displaying an blue flag on the race committee vessel and an orange buoy at the port end of the line.
- 9.2 When a finish boat is not on station boats are to record and report their own finish time using the outer red beacon of the entrance to Manly harbor.

10. PENALTY SYSTEM

- 10.1. For all boats rule 44.1 is changed so that the Two-Turns Penalty is replaced by the One-Turn Penalty.

11. TIME LIMIT

- 11.1. The time limit for all boats to be finished is 1600 hours.

12. PROTESTS

- 12.1 All WAGS races are intended to that of a **fun and enjoyable nature** and therefore there should be no reason to Protest. Competitors are encouraged to resolve their differences in a respectable manner.
- 12.2 Should an incident occur that cannot be resolved, competitors are required to lodge a protest with the Sailing Office via an email to sailing@rqys.com.au by 1600 hrs the day after the relevant Wags race. Protest forms are available at the sailing office and online.

13. SCORING AND HANDICAPS

- 13.1 All Races
- a. Handicap start times will be allocated to each boat upon registration.
 - b. Each race is an individual race and will be scored as such with the exception of races for the Squadron Championship.
- 13.2 Races to determine WAGS Squadron Multihull and Monohull Champions.
- a. PBH handicaps as adjusted from time to time, will be applied to elapsed times to calculate results to determine the WAGS Squadron Monohull Champion and WAGS Squadron Multihull Champion.
 - b. WAGS Squadron Champions will be determined from the results of the following races:
The first Wednesday race in each month from October to the following May; and
The Ross Jullyan Memorial Trophy race day in November.
There will be drops after race 3, race 6, race 9.
 - c. To qualify for these trophies the skipper/owner must be a Full member or equivalent of RQYS and their yacht registered with RQYS

14. SAFETY REGULATIONS

- 14.1 All competitors intending to start shall report to the WAGS Table located inside the RQ Bar by no later than 1225 hrs to register for the day's race or by VHF Channel 72 when committee/start boat displays station flag (orange).
- 14.1.1 A current / Intended POB shall be provided at Sign-On.
- 14.2 A boat that retires from a race shall notify the race committee on VHF Channel 72 as soon as possible.
- 14.3 Unless in use, no part of the **anchor** may project forward of the sheer line at any time whilst racing.
- 14.4 Attention is drawn to SI 19.

15. DIVISIONS

Signals for divisions shall use the following flags:
MONOHULLS Numeral Pennant #1
MULTIHULLS Numeral Pennant #5

16. RADIO COMMUNICATION

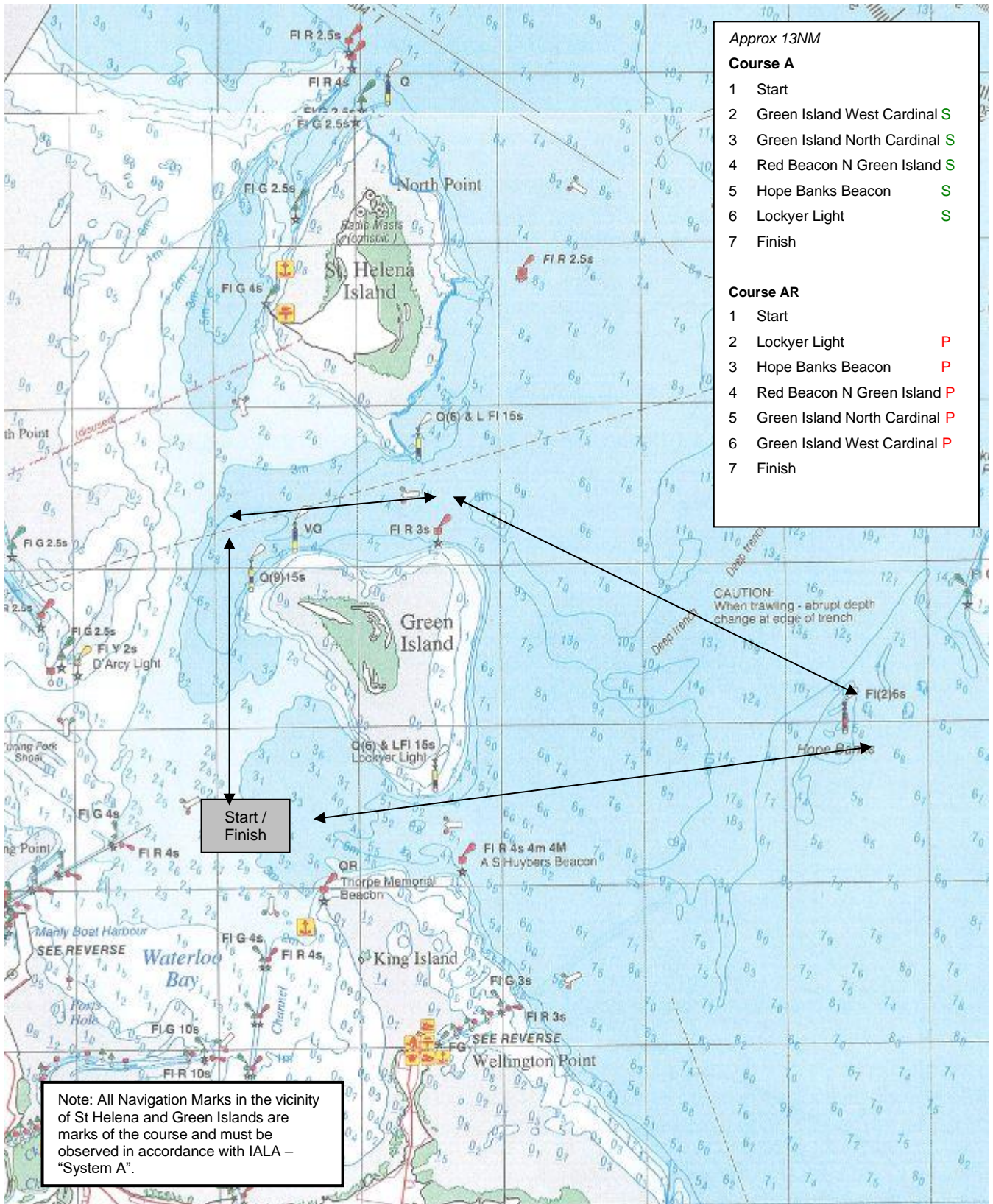
- 16.1 The Race Committee may communicate information to the competing boats during the course of the race. All boats are required to **monitor VHF Channel 72** for the duration of the race.
- 16.2 If the race committee displays code flag L alternate **VHF channel 77** will be used this changes SI 16.1.
- 16.3 Except in an emergency, a boat shall neither make radio transmissions while racing nor receive radio communications not available to all boats. This restriction also applies to mobile telephones.

WAGS 2021 - 2022
NOTICE OF RACE & SAILING INSTRUCTIONS
 The Royal Queensland Yacht Squadron (RQYS)

COURSE A



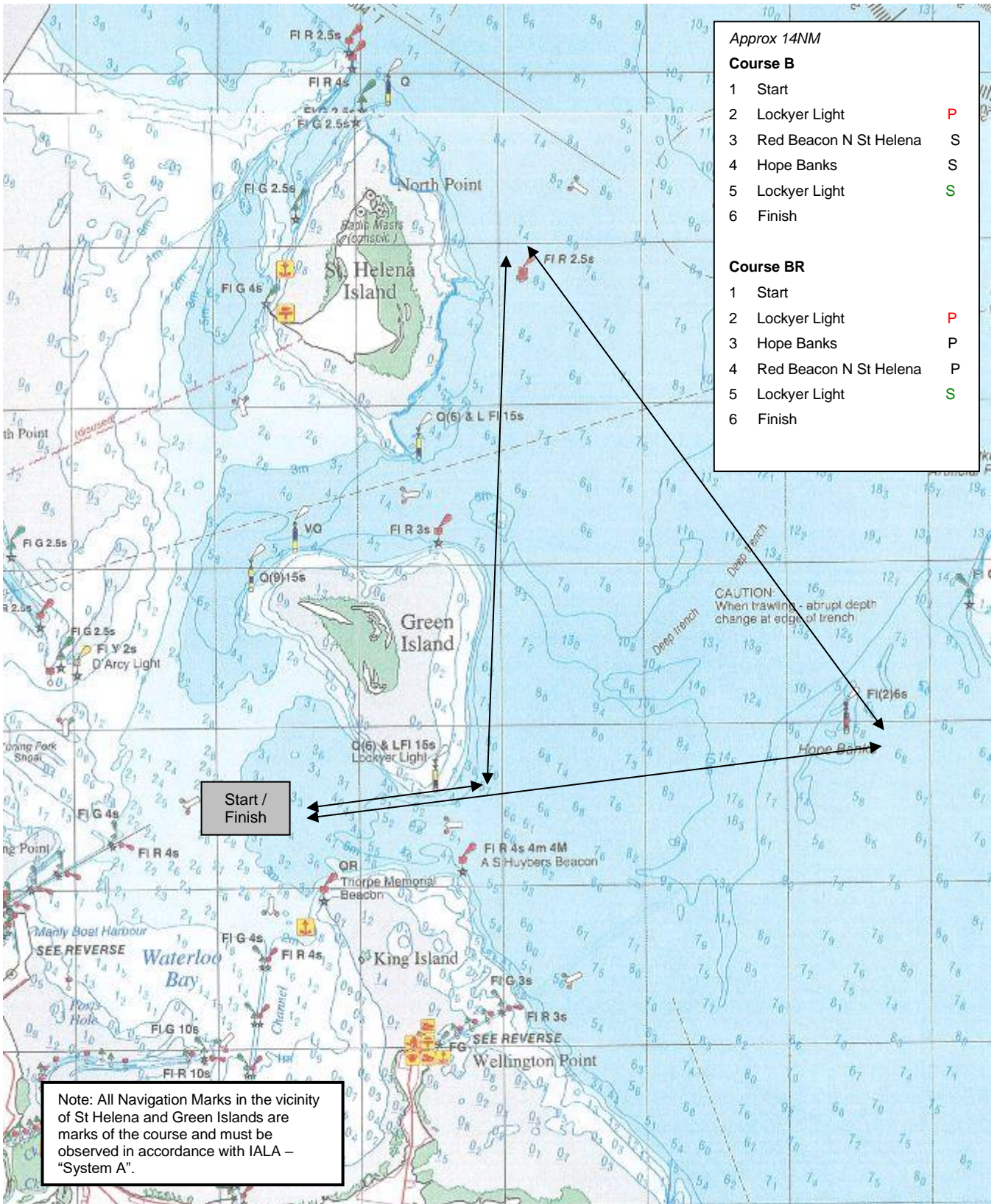
/ COURSE AR



Note: charts illustrated in these sailing instructions show the general racing area – **Not for Navigation**

WAGS 2021 - 2022
NOTICE OF RACE & SAILING INSTRUCTIONS
 The Royal Queensland Yacht Squadron (RQYS)

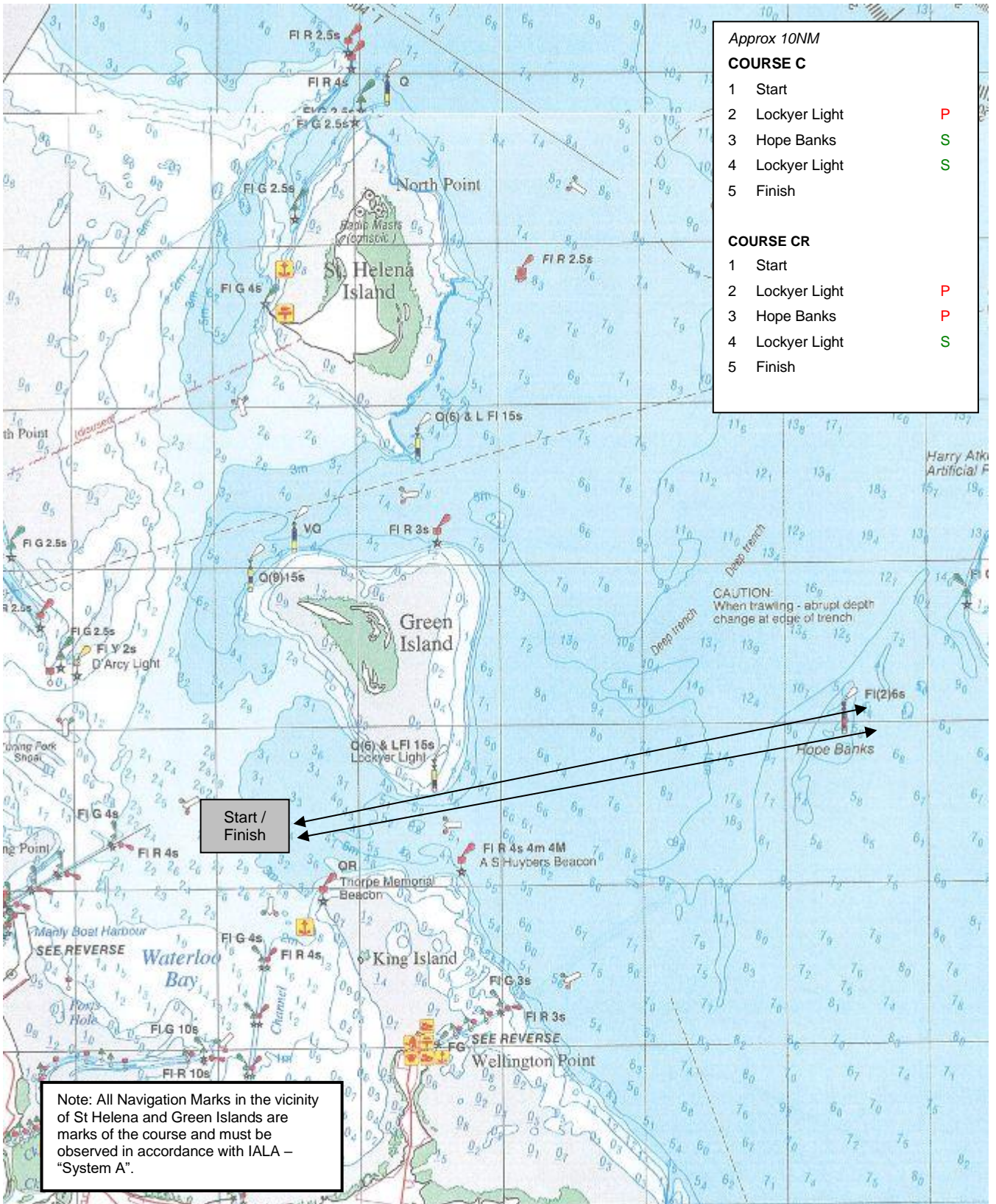
COURSE B  / **COURSE BR**  



Note: charts illustrated in these sailing instructions show the general racing area – **Not for Navigation**

WAGS 2021 - 2022
NOTICE OF RACE & SAILING INSTRUCTIONS
 The Royal Queensland Yacht Squadron (RQYS)

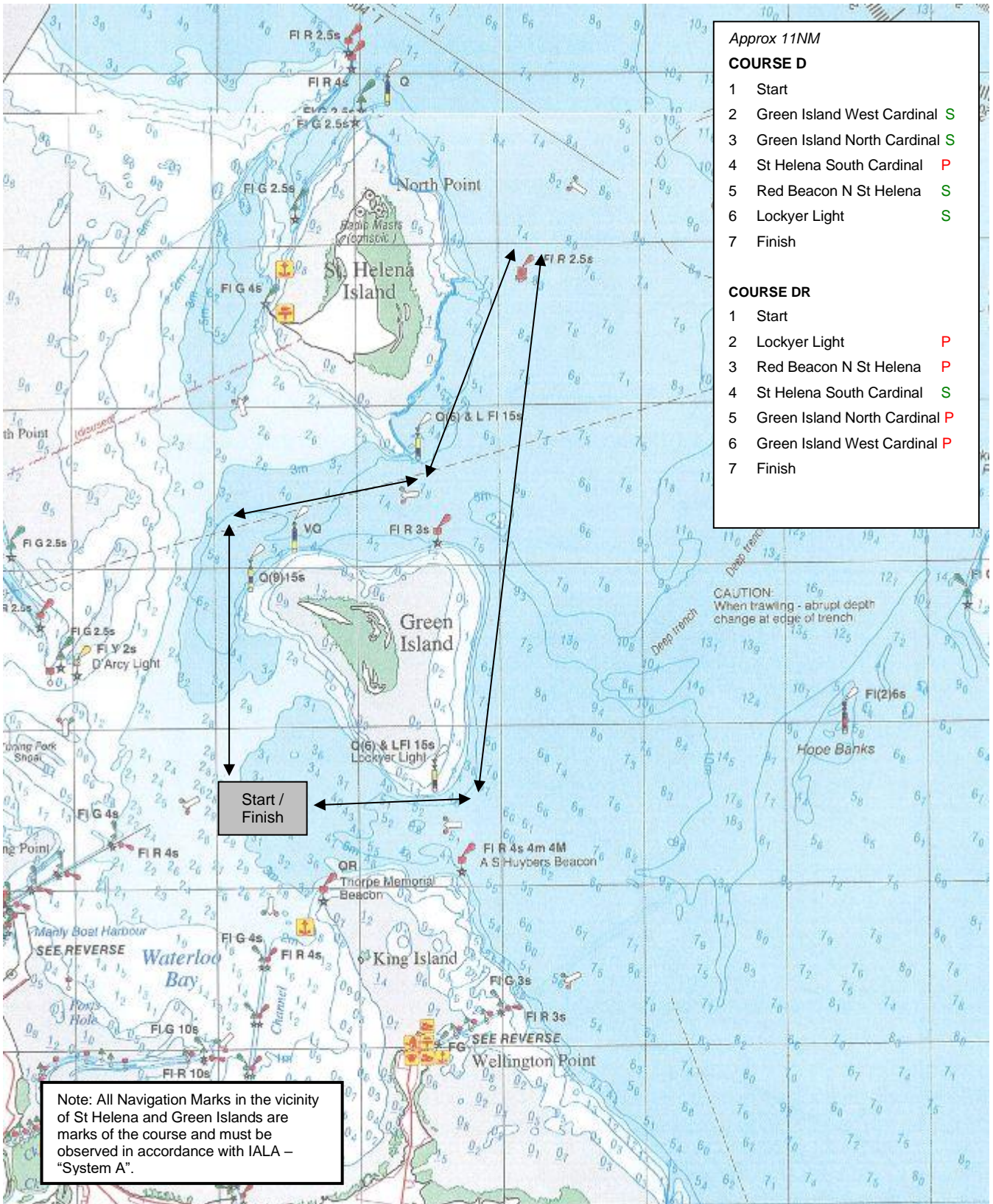
COURSE C  / **COURSE CR**  



Note: charts illustrated in these sailing instructions show the general racing area – **Not for Navigation**

WAGS 2021 - 2022
NOTICE OF RACE & SAILING INSTRUCTIONS
 The Royal Queensland Yacht Squadron (RQYS)

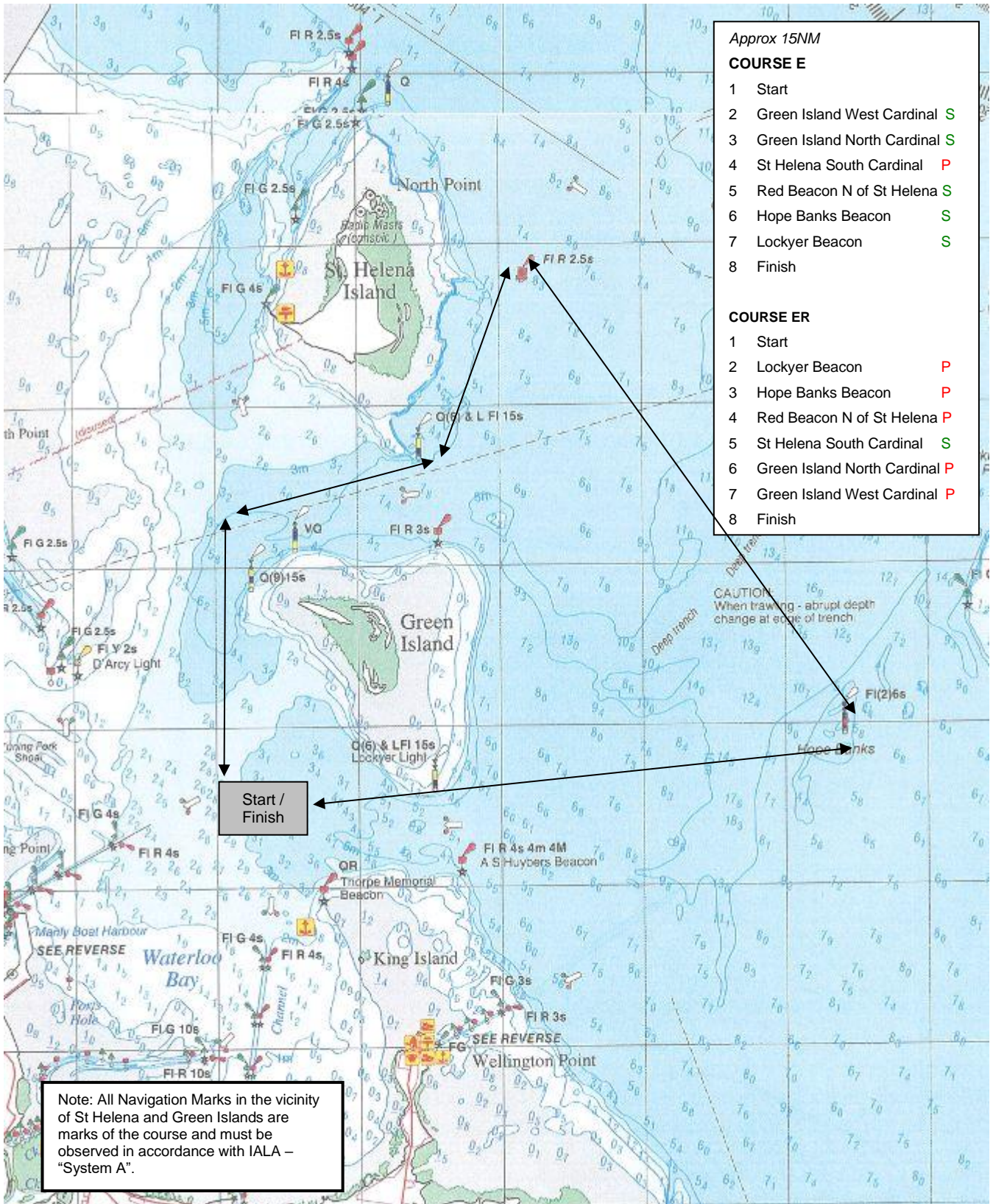
COURSE D  / **COURSE DR**  



Note: charts illustrated in these sailing instructions show the general racing area – **Not for Navigation**

WAGS 2021 - 2022
NOTICE OF RACE & SAILING INSTRUCTIONS
 The Royal Queensland Yacht Squadron (RQYS)

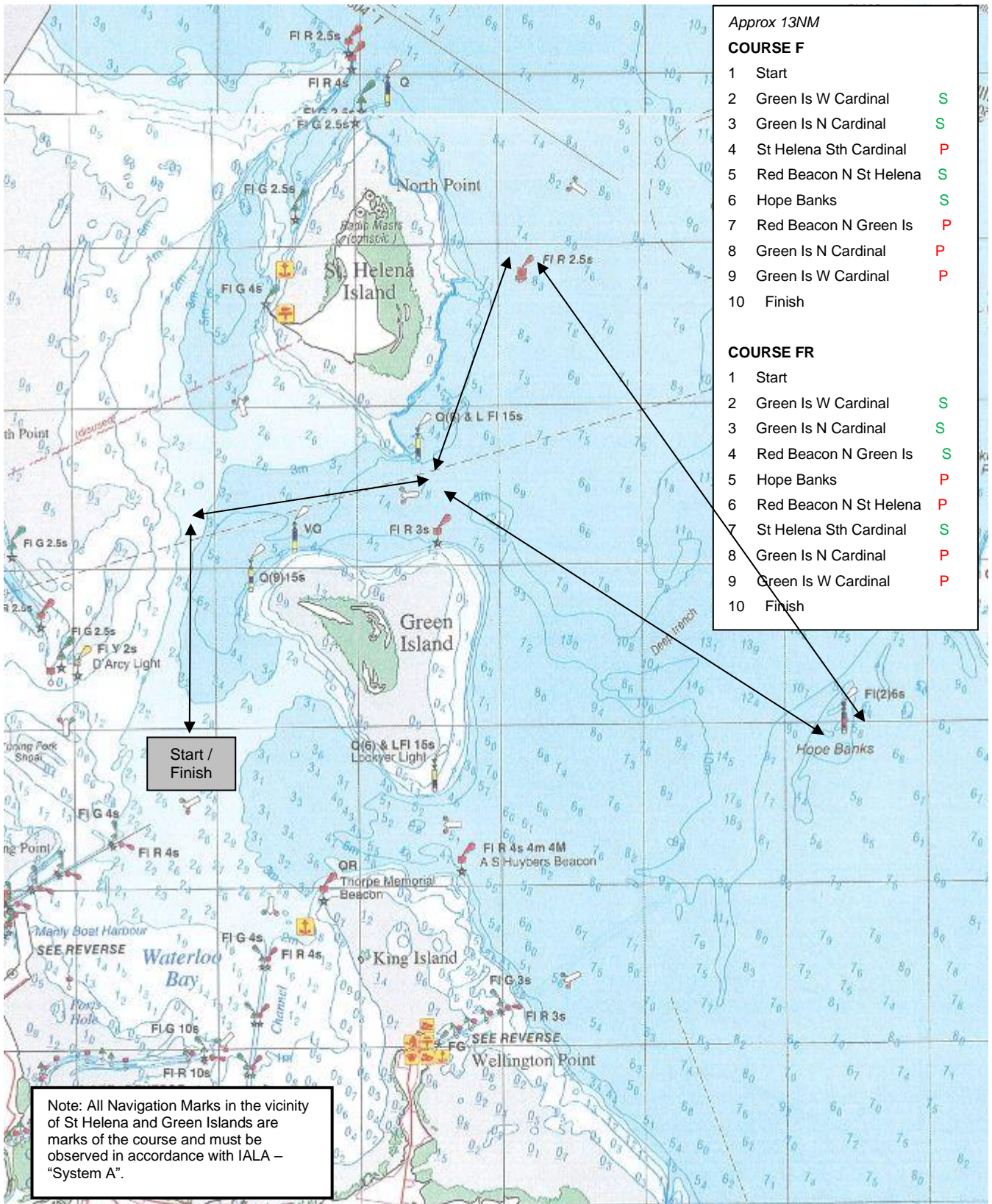
COURSE E  / **COURSE ER** 



Note: charts illustrated in these sailing instructions show the general racing area – **Not for Navigation**

WAGS 2021 - 2022
NOTICE OF RACE & SAILING INSTRUCTIONS
 The Royal Queensland Yacht Squadron (RQYS)

COURSE F  / **COURSE FR**  



Approx 13NM

COURSE F		
1	Start	
2	Green Is W Cardinal	S
3	Green Is N Cardinal	S
4	St Helena Sth Cardinal	P
5	Red Beacon N St Helena	S
6	Hope Banks	S
7	Red Beacon N Green Is	P
8	Green Is N Cardinal	P
9	Green Is W Cardinal	P
10	Finish	

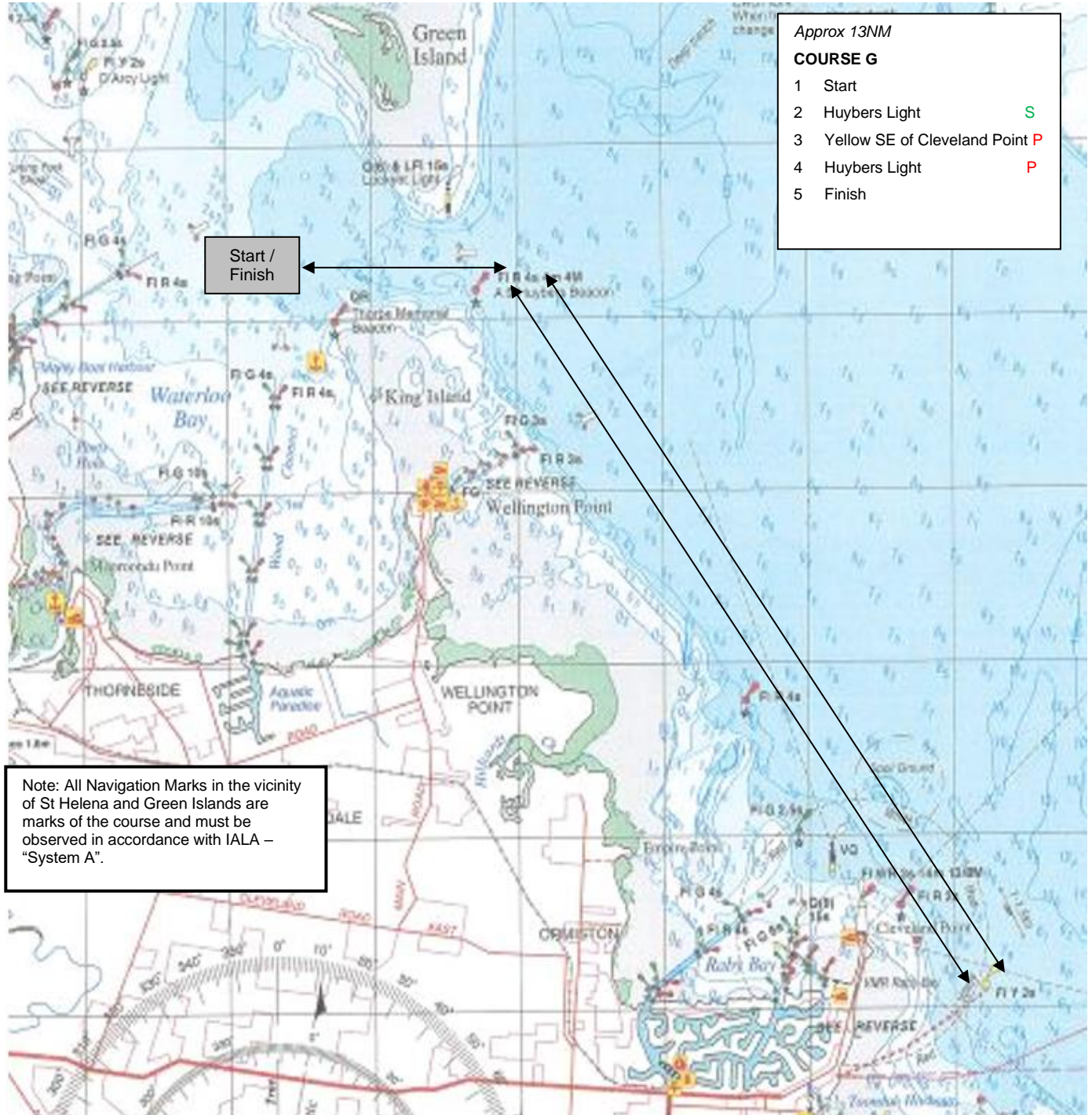
COURSE FR		
1	Start	
2	Green Is W Cardinal	S
3	Green Is N Cardinal	S
4	Red Beacon N Green Is	S
5	Hope Banks	P
6	Red Beacon N St Helena	P
7	St Helena Sth Cardinal	S
8	Green Is N Cardinal	P
9	Green Is W Cardinal	P
10	Finish	

Note: All Navigation Marks in the vicinity of St Helena and Green Islands are marks of the course and must be observed in accordance with IALA – "System A".

Note: charts illustrated in these sailing instructions show the general racing area – **Not for Navigation**

WAGS 2021 - 2022
NOTICE OF RACE & SAILING INSTRUCTIONS
 The Royal Queensland Yacht Squadron (RQYS)

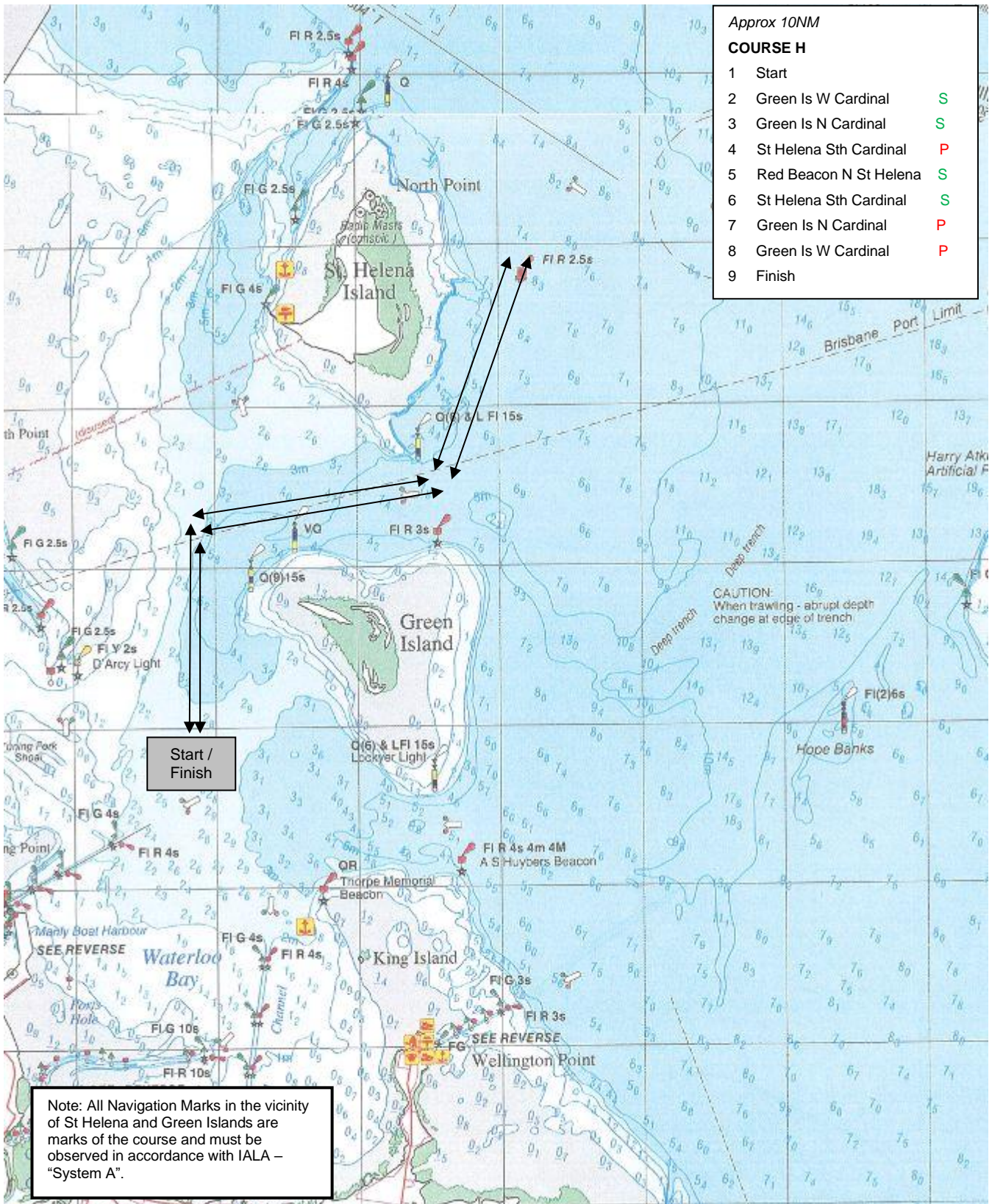
COURSE G



Note: charts illustrated in these sailing instructions show the general racing area – **Not for Navigation**

WAGS 2021 - 2022
NOTICE OF RACE & SAILING INSTRUCTIONS
 The Royal Queensland Yacht Squadron (RQYS)

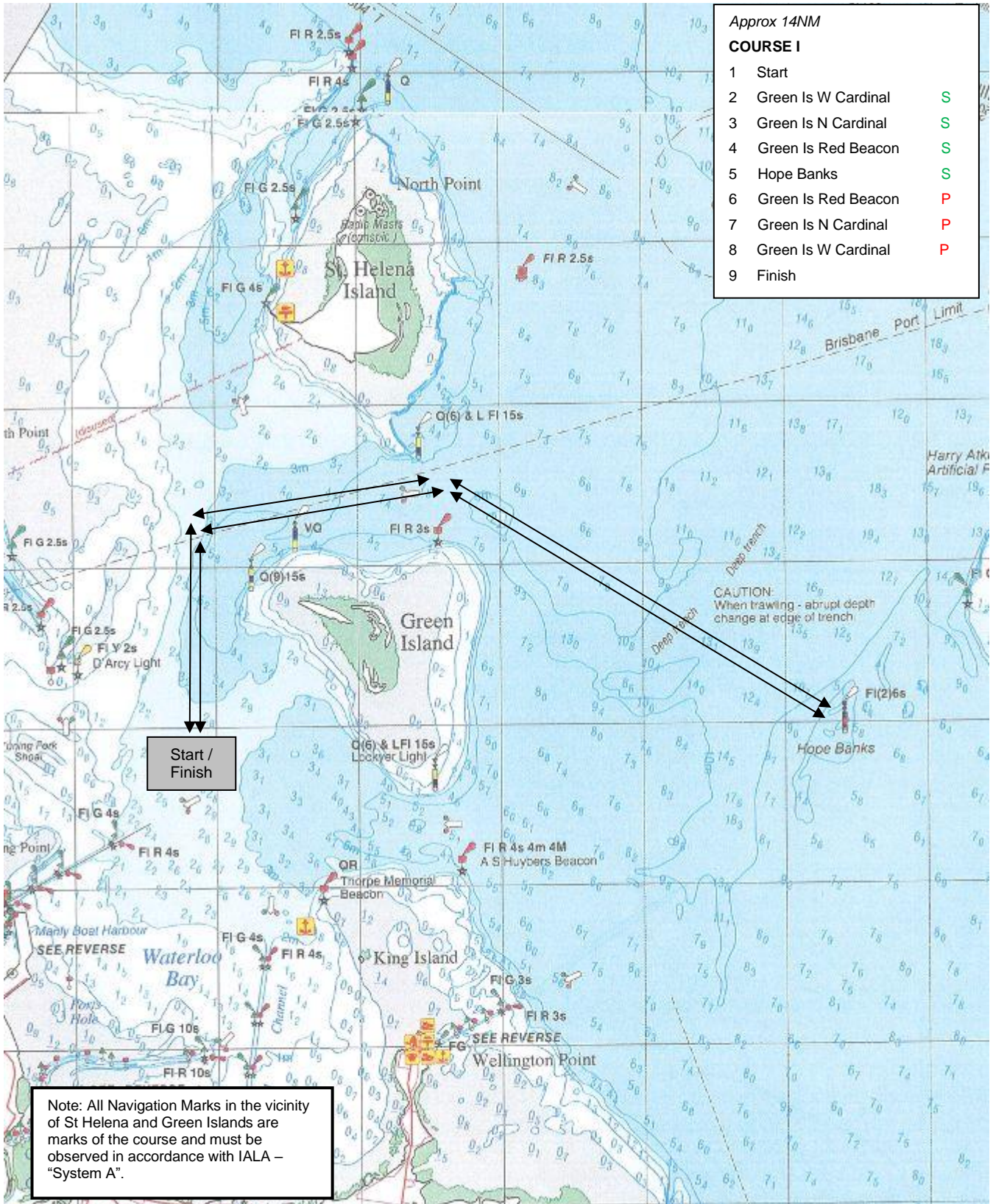
COURSE H



Note: charts illustrated in these sailing instructions show the general racing area – **Not for Navigation**

WAGS 2021 - 2022
NOTICE OF RACE & SAILING INSTRUCTIONS
 The Royal Queensland Yacht Squadron (RQYS)

COURSE I  / **COURS IR**  



Note: charts illustrated in these sailing instructions show the general racing area – **Not for Navigation**

Thanks to WAGS Sponsors

